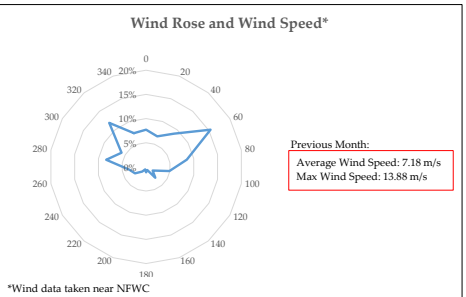
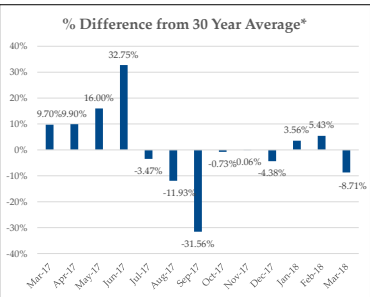
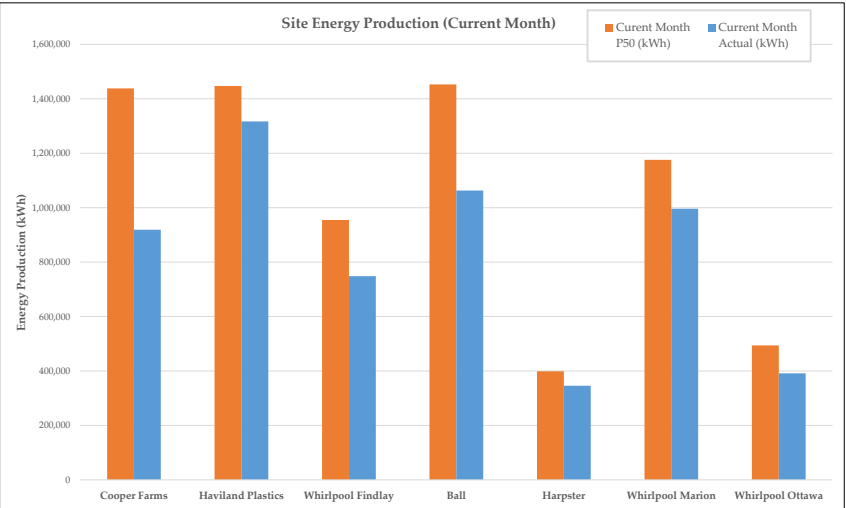


Fleet Energy Production Summary & Month Characterization

	Energy Production					
	Size (MW)	Curent Month P50 (kWh)	Current Month Actual (kWh)	Rolling 12 Month P50 (kWh)	Rolling 12 Month Actual (kWh)	Rolling 12 Month CF
Cooper Farms	4.5	1,438,497	918,970	12,122,935	12,554,721	31.85%
Haviland Plastics	4.5	1,447,248	1,316,810	12,384,999	14,383,024	36.49%
Whirlpool Findlay	3.0	955,000	748,389	8,251,000	8,183,202	31.14%
Ball	4.5	1,453,000	1,062,956	12,548,000	11,050,468	28.03%
Harpster	1.5	399,000	345,831	3,890,000	3,503,261	26.66%
Whirlpool Marion	4.5	1,176,000	996,362	11,166,000	-	-
Whirlpool Ottawa	1.5	494,000	391,503	4,266,000	-	-
Fleet	24.0	7,362,745	5,780,821	64,628,934	49,674,676	
Fleet Rolling 12 month Capacity Factor:						30.83%

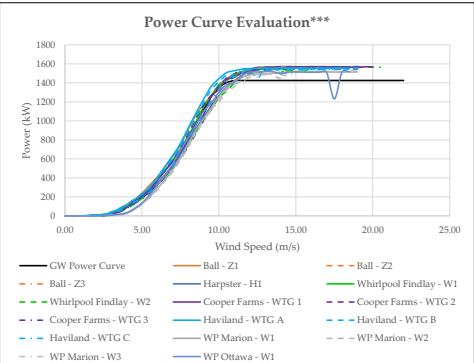
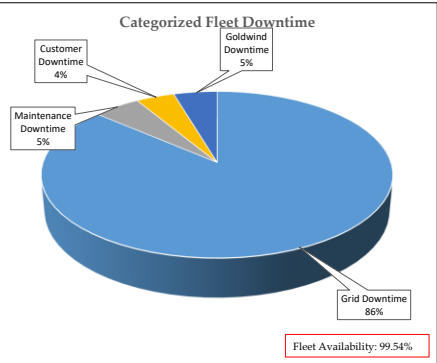
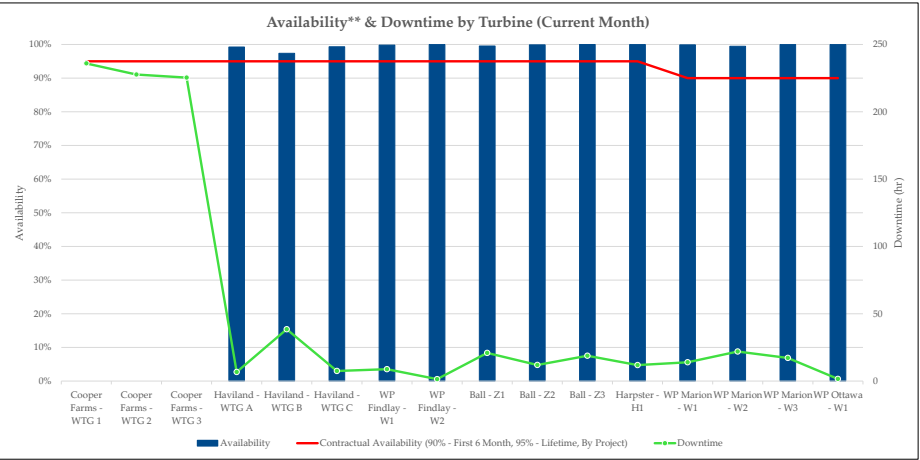


* Rolling month characterization is always one month behind because the data used in this analysis is always one month behind.

Fleet Performance & Metrics

Safety Summary			
This Month		Fleet Cumulative	
Recordable Incident(s):	0		0
Near Miss(es):	0		0

Planned Maintenance*			
Date	Project - Event	Duration (hrs)	Wind Turbine
May-2018	WP Marion - Goldwind 6 Month Maintenance	-8	W1, W2, W3
May-2018	WP Findlay - Goldwind 2 Year Maintenance	-15	W1, W2
June-2018	Harpster - Goldwind 2 Year Maintenance	-15	H1
June-2018	Cooper Farms - Goldwind 6 Year Maintenance	-15	WTG1, WTG2, WTG3
June-2018	Haviland Plastics - Goldwind 6 Year Maintenance	-15	WTGA, WTGB, WTGC
August-2018	WP Ottawa - Goldwind 6 Month Maintenance	-8	W1
September-2018	Ball - Goldwind 2.5 Year Maintenance	-8	Z1, Z2, Z3



** Availability in this report refers to Goldwind's contractual availability (as defined per the applicable contract per project). Cooper availability still being determined.
*** Power Curve validation completed using LIDAR equivalent wind speeds (conversion introduces about 3% error) and 95 % of GW Power Curve (warranty amount).