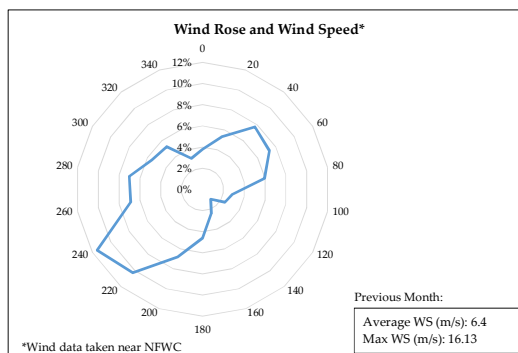
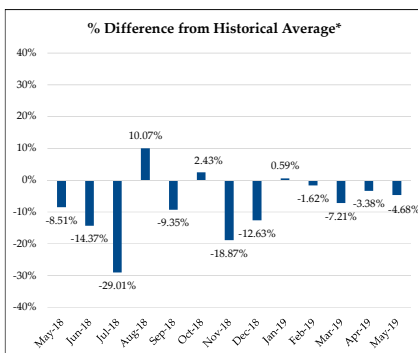
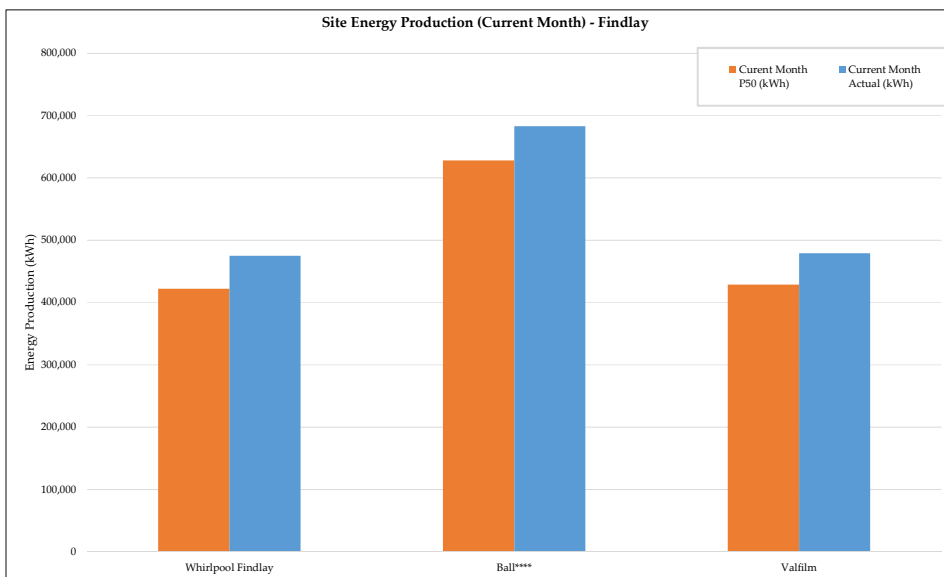


Wind for Industry® Fleet Report - Findlay

June-2019

Fleet Energy Production Summary & Month Characterization

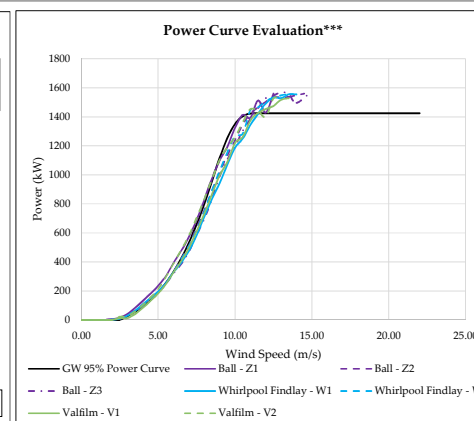
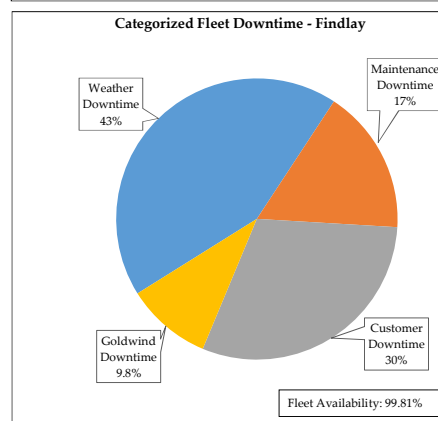
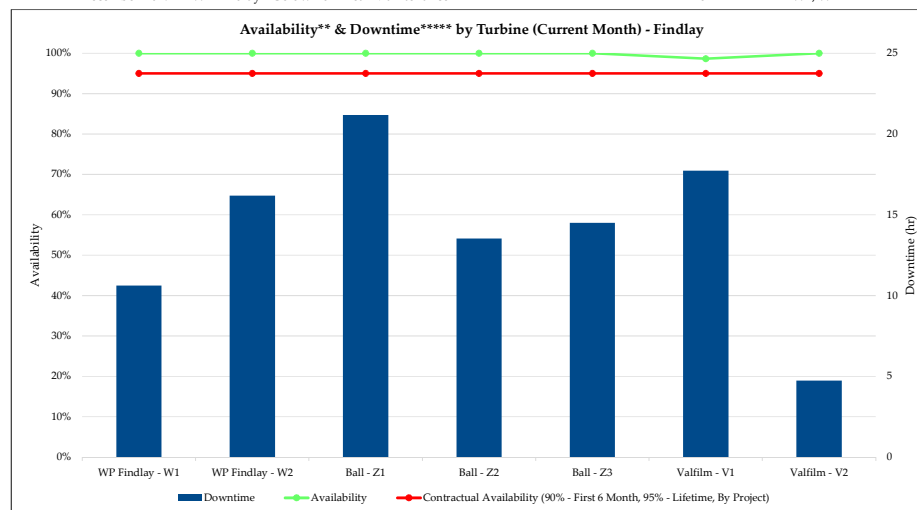
	Energy Production					
	Size (MW)	Current Month P50 (kWh)	Current Month Actual (kWh)	Rolling 12 Month P50 (kWh)	Rolling 12 Month Actual (kWh)	Rolling 12 Month CF
Whirlpool Findlay	3.0	422,000	474,817	8,200,000	7,548,495	28.72%
Ball****	4.5	628,000	682,994	12,222,000	10,751,896	27.28%
Valfilm	3.0	429,000	479,262	7,625,000	-	-
Fleet - Findlay	10.5	1,479,000	1,637,073	28,047,000	18,300,391	
Fleet - Findlay Rolling 12 month Capacity Factor:						28.00%



Fleet Performance & Metrics

	Safety Summary	
	This Month	Fleet Cumulative
Recordable Incident(s):	0	0
Near Miss(es):	0	0

Planned Maintenance			
Date	Project - Event	Duration (hrs)	Wind Turbine
July-2019	Valfilm - Goldwind 6 Month Maintenance	~8	V1, V2
October-2019	Ball - Goldwind 3.5 Year Maintenance	~8	Z1, Z2, Z3
December-2019	WP Findlay - Goldwind 4 Year Maintenance	~8	W1, W2



** Availability in this report refers to Goldwind's contractual availability (as defined per the applicable contract per project).

*** Power Curve validation completed using LiDAR equivalent wind speeds (conversion introduces about 3% error) and 95% of GW Power Curve (warranty amount).

****Ball production total for June is an estimate due to Z3 communications loss.

*****Ball downtime total for June is an estimate due to Z3 communications loss.

*****Valfilm Goldwind Availability & Downtime for June under dispute.

* Rolling month characterization is always one month behind because the data used in this analysis is always one month behind. Changes to rolling month characterization reflect additional data availability.