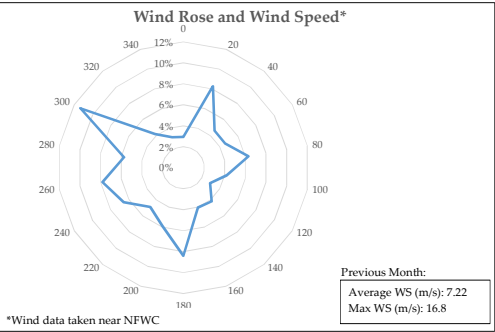
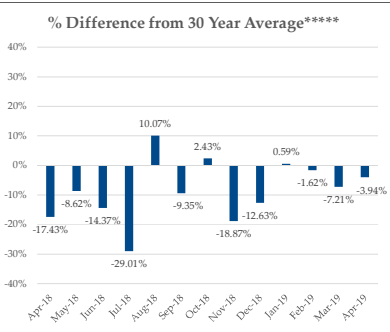
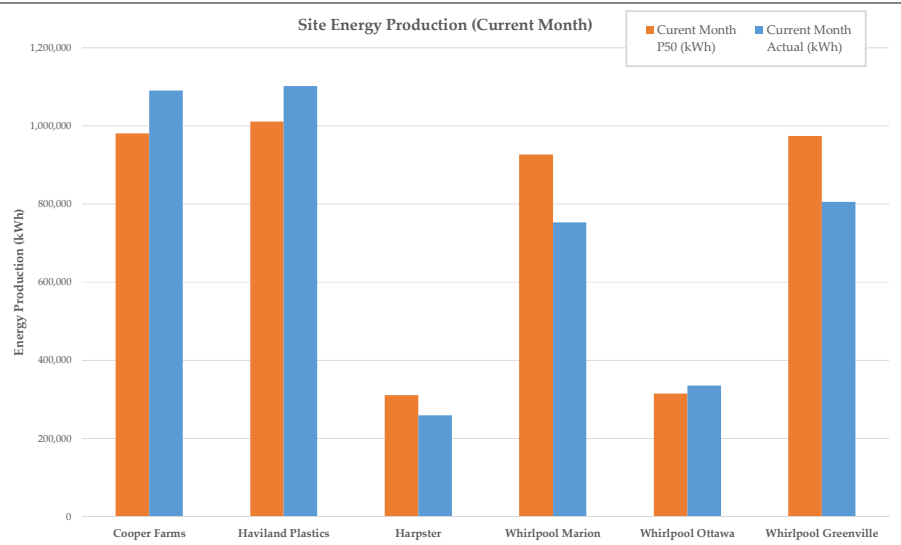


Wind for Industry® Fleet Report - Regional
May-2019



Fleet Energy Production Summary & Month Characterization

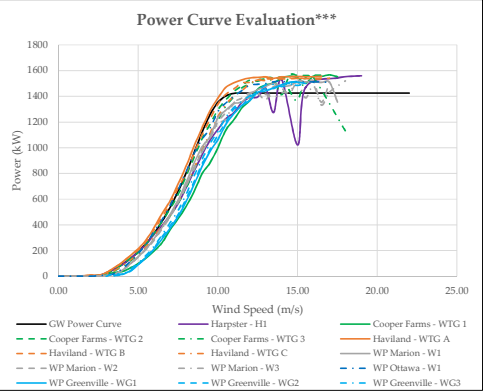
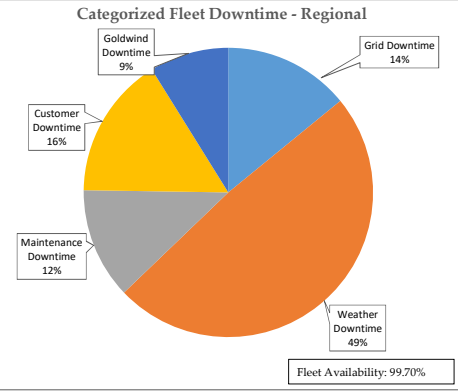
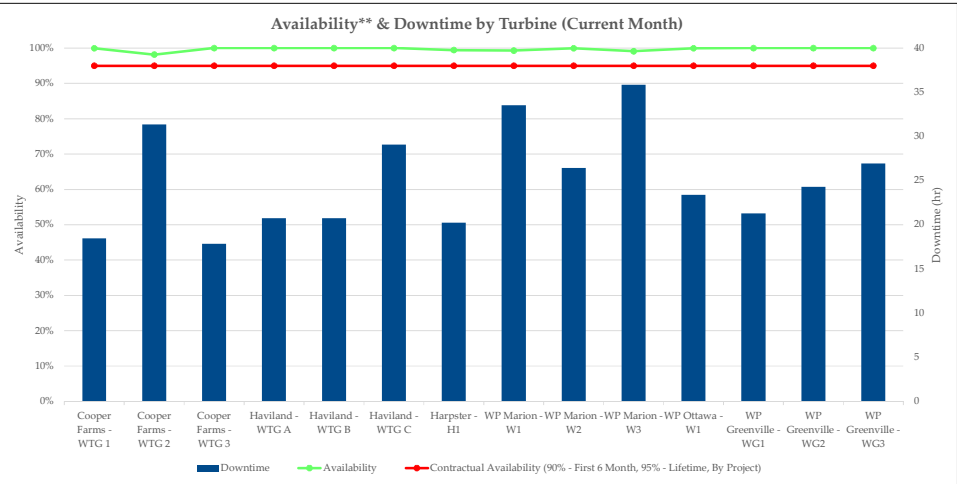
	Size (MW)	Energy Production				
		Current Month P50 (kWh)	Current Month Actual (kWh)	Rolling 12 Month P50 (kWh)	Rolling 12 Month Actual (kWh)	Rolling 12 Month CF
Cooper Farms	4.5	980,450	1,090,450	12,122,935	12,547,532	31.83%
Haviland Plastics	4.5	1,010,966	1,102,180	12,384,999	12,730,180	32.29%
Harpster	1.5	311,000	259,599	3,890,000	3,271,855	24.90%
Whirlpool Marion	4.5	927,000	753,487	11,166,000	9,175,383	23.28%
Whirlpool Ottawa	1.5	315,000	335,596	4,266,000	3,747,055	28.52%
Whirlpool Greenville	4.5	974,000	805,247	12,036,000	-	-
Fleet - Regional	21.0	4,518,416	4,346,559	55,865,934	41,472,005	
Fleet - Regional Rolling 12 month Capacity Factor:						28.16%



* Rolling month characterization is always one month behind because the data used in this analysis is always one month behind. Changes to rolling month characterization reflect additional data availability.

Fleet Performance & Metrics

Safety Summary			
		This Month	Fleet Cumulative
Recordable Incident(s):		0	0
Near Miss(es):		0	0
Planned Maintenance			
Date	Project - Event	Duration (hrs)	Wind Turbine
June-2019	WP Greenville - Goldwind 6 Month Maintenance	~8	WG1, WG2, WG3
September-2019	Cooper - Goldwind 7 Year Maintenance	~15	WTG1, WTG2, WTG3
September-2019	Haviland Plastics - Goldwind 7 Year Maintenance	~15	WTGA, WTGB, WTGC
September-2019	WP Ottawa - Goldwind 1.5 Year Maintenance	~8	W1
October-2019	Harpster - Goldwind 3.5 Year Maintenance	~8	H1
November-2019	WP Marion - Goldwind 1 Year Maintenance	~15	W1, W2, W3



** Availability in this report refers to Goldwind's contractual availability (as defined per the applicable contract per project).
*** Power Curve validation completed using LiDAR equivalent wind speeds (conversion introduces about 3% error) and 95 % of GW Power Curve (warranty amount).