

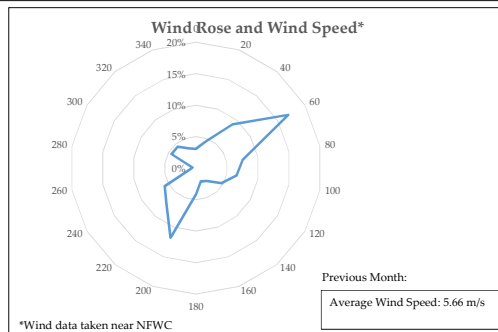
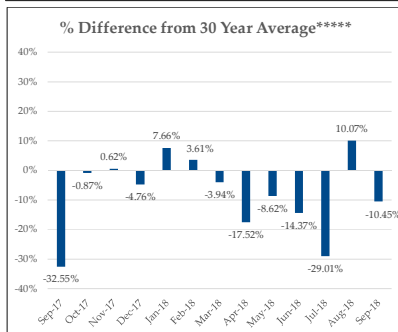
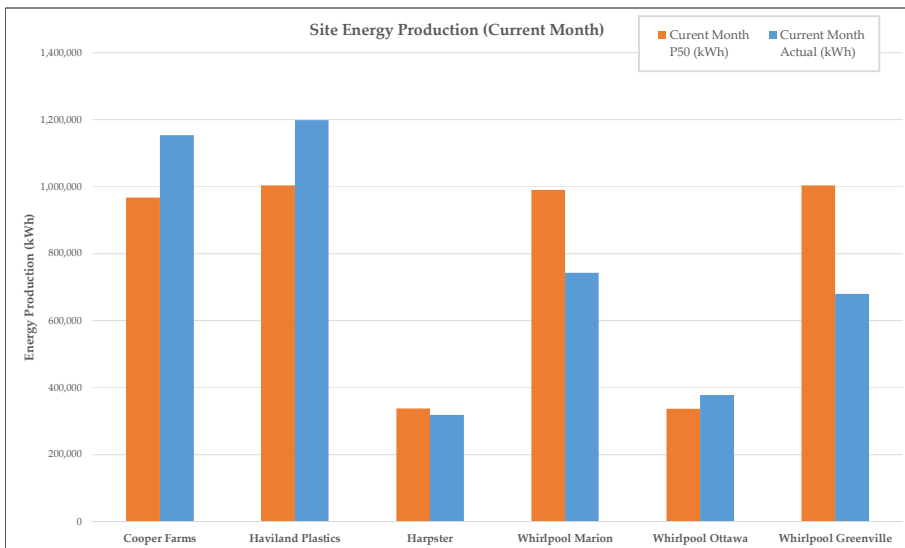
Wind for Industry® Fleet Report - Regional

October-2018



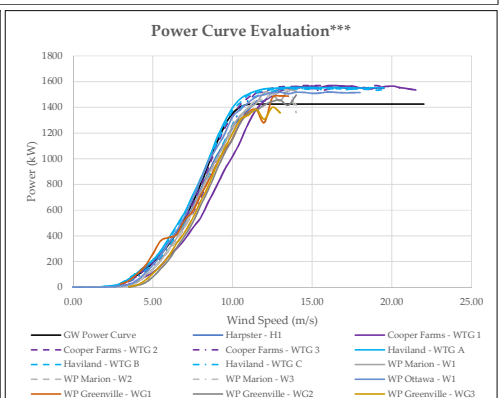
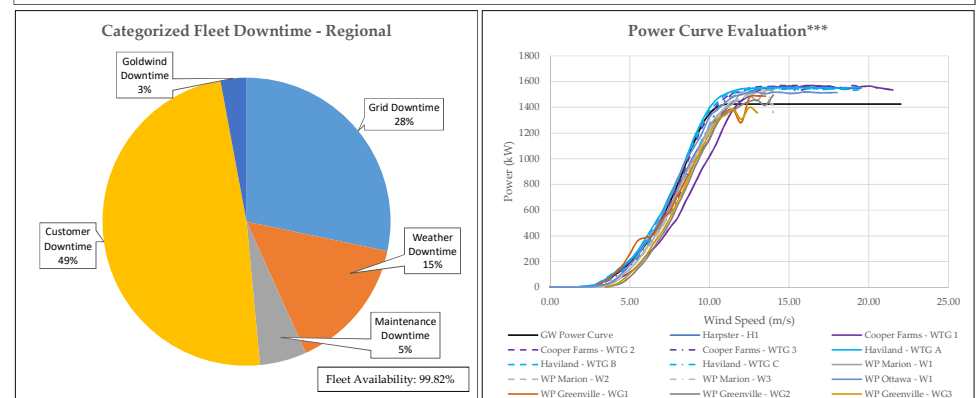
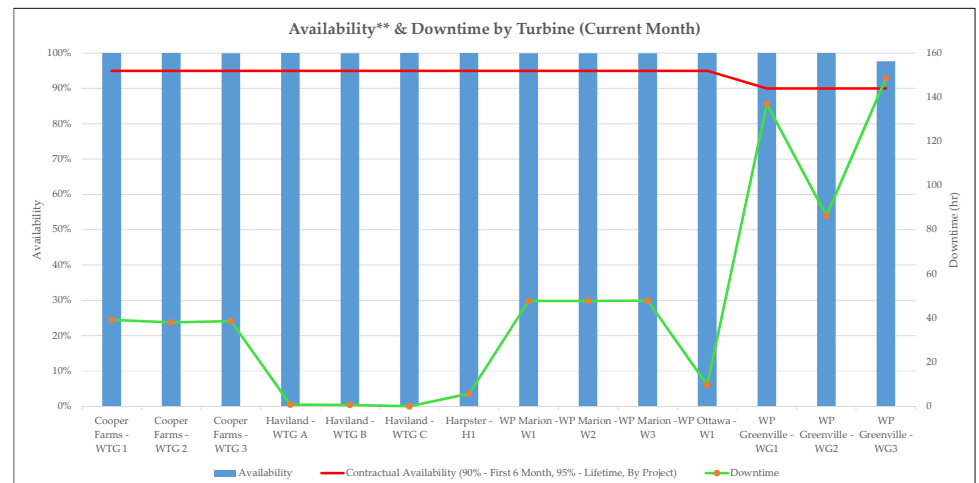
Fleet Energy Production Summary & Month Characterization

	Size (MW)	Energy Production				
		Current Month P50 (kWh)	Current Month Actual (kWh)	Rolling 12 Month P50 (kWh)	Rolling 12 Month Actual (kWh)	Rolling 12 Month CF
Cooper Farms	4.5	967,926	1,153,610	12,122,935	12,192,489	30.93%
Haviland Plastics	4.5	1,003,602	1,199,060	12,384,999	13,713,600	34.79%
Harpster	1.5	338,000	319,425	3,890,000	3,385,165	25.76%
Whirlpool Marion	4.5	990,000	742,865	11,166,000	8,683,976	22.03%
Whirlpool Ottawa	1.5	337,000	377,866	4,266,000	-	-
Whirlpool Greenville	4.5	1,003,602	679,703	12,036,000	-	-
Fleet - Regional	21.0	4,640,130	4,472,529	55,865,934	37,975,230	28.38%
Fleet - Regional Rolling 12 month Capacity Factor:						28.38%



Fleet Performance & Metrics

Safety Summary			
		This Month	Fleet Cumulative
Recordable Incident(s):		0	0
Near Miss(es):		0	0
Planned Maintenance****			
Date	Project - Event	Duration (hrs)	Wind Turbine
November-2018	WP Marion - Goldwind 1 Year Maintenance	~15	W1,W2,W3
November-2018	Harpster - Goldwind 2.5 Year Maintenance	~8	H1
November-2018	WP Greenville - Goldwind 500 Hour Maintenance	~8	WG1,WG2,WG3
January-2019	Cooper - Goldwind 6.5 Year Maintenance	~8	WTG1, WTG2, WTG3
January-2019	Haviland Plastics - Goldwind 6.5 Year Maintenance	~8	WTGA, WTGB, WTGC
January-2019	WP Ottawa - Goldwind 1 Year Maintenance	~15	W1



* Rolling month characterization is always one month behind because the data used in this analysis is always one month behind. Changes to rolling month characterization reflect updated analysis methodology and additional data availability.

** Availability in this report refers to Goldwind's contractual availability (as defined per the applicable contract per project).
 *** Power Curve validation completed using LiDAR equivalent wind speeds (conversion introduces about 3% error) and 95 % of
 ****Dates changed to reflect Goldwind's projected maintenance schedule.
 *****WP Greenville October Production read from meter.