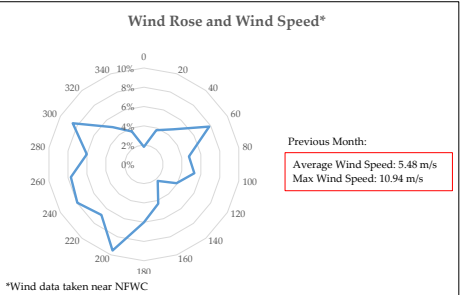
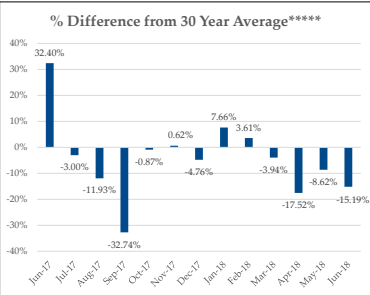
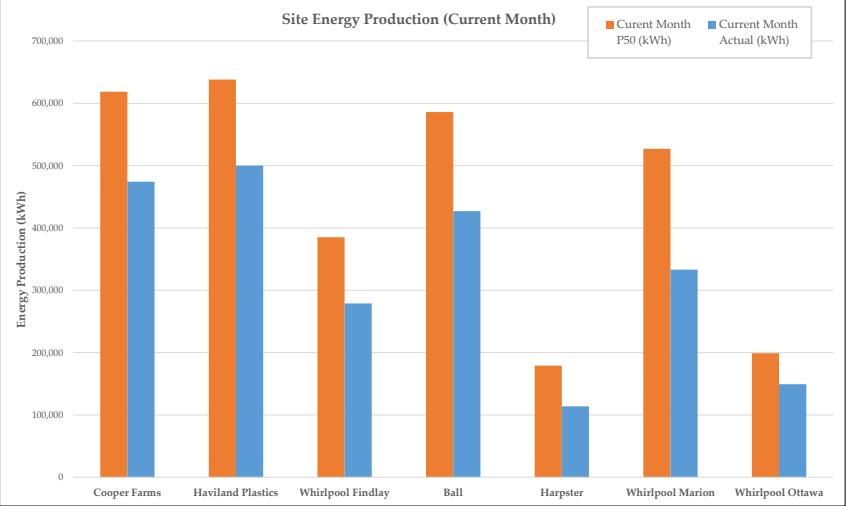


Fleet Energy Production Summary & Month Characterization

	Energy Production					
	Size (MW)	Current Month P50 (kWh)	Current Month Actual (kWh)	Rolling 12 Month P50 (kWh)	Rolling 12 Month Actual (kWh)	Rolling 12 Month CF
Cooper Farms	4.5	618,687	474,100	12,122,935	12,026,841	30.51%
Haviland Plastics	4.5	638,097	499,960	12,384,999	13,529,136	34.32%
Whirlpool Findlay	3.0	385,000	278,804	8,251,000	7,667,514	29.18%
Ball	4.5	586,000	427,049	12,548,000	10,411,446	26.41%
Harpster	1.5	179,000	113,791	3,890,000	3,319,163	25.26%
Whirlpool Marion	4.5	527,000	333,148	11,166,000	-	-
Whirlpool Ottawa	1.5	199,000	149,361	4,266,000	-	-
Fleet	24.0	3,132,784	2,276,213	64,628,934	46,954,100	
Fleet Rolling 12 month Capacity Factor:						29.14%

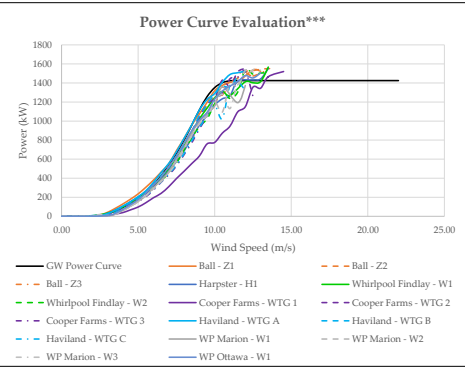
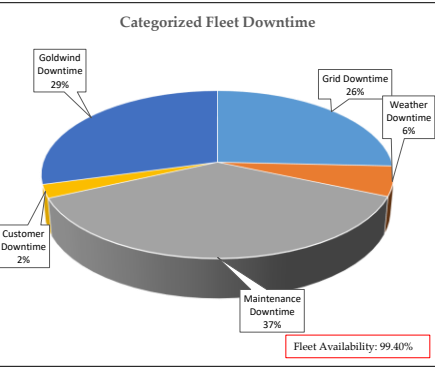
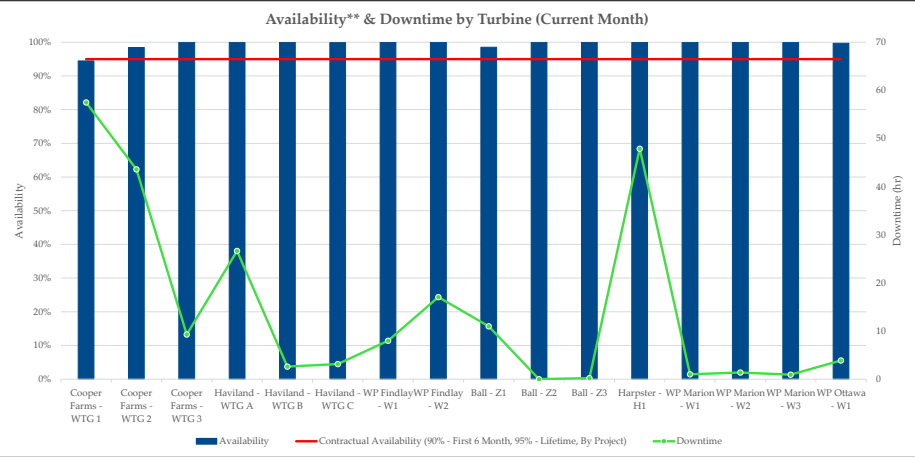


* Rolling month characterization is always one month behind because the data used in this analysis is always one month behind. Changes to rolling month characterization reflect updated analysis methodology and additional data availability.

Fleet Performance & Metrics

Safety Summary		
	This Month	Fleet Cumulative
Recordable Incident(s):	0	0
Near Miss(es):	0	0

Planned Maintenance****			
Date	Project - Event	Duration (hrs)	Wind Turbine
August-2018	Haviland Plastics - Goldwind 6 Year Maintenance	-15	WTGB, WTGC
August-2018	WP Ottawa - Goldwind 6 Month Maintenance	-8	W1
September-2018	Ball - Goldwind 2.5 Year Maintenance	-8	Z1, Z2, Z3
October-2018	WP Marion - Goldwind 1 Year Maintenance	-15	W1, W2, W3
November-2018	Harpster - Goldwind 2.5 Year Maintenance	-8	H1
November-2018	Cooper - Goldwind 6.5 Year Maintenance	-8	WTG1, WTG2, WTG3
November-2018	WP Findlay - Goldwind 2.5 Year Maintenance	-8	W1, W2



** Availability in this report refers to Goldwind's contractual availability (as defined per the applicable contract per project).
*** Power Curve validation completed using LIDAR equivalent wind speeds (conversion introduces about 3% error) and 95 % of GW Power Curve (warranty amount).
****Goldwind 6 Year Maintenance for Haviland WTGB and WTGC moved to August-2018.