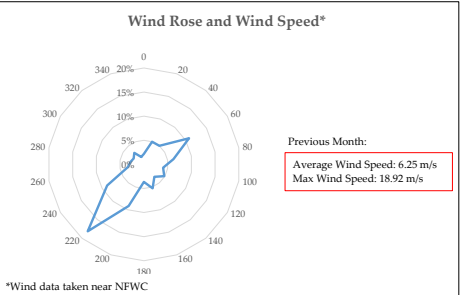
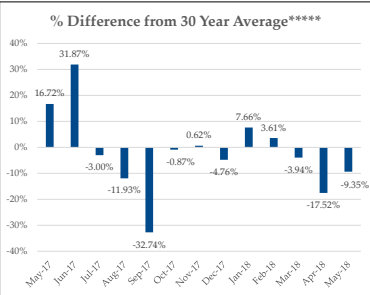
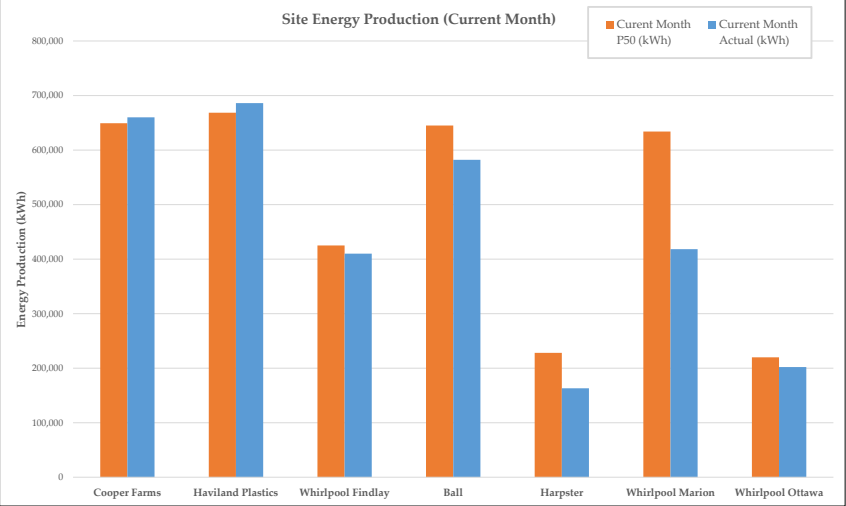


Fleet Energy Production Summary & Month Characterization

	Energy Production					
	Size (MW)	Current Month P50 (kWh)	Current Month Actual (kWh)	Rolling 12 Month P50 (kWh)	Rolling 12 Month Actual (kWh)	Rolling 12 Month CF
Cooper Farms	4.5	649,158	660,000	12,122,935	12,114,301	30.73%
Haviland Plastics	4.5	668,411	686,130	12,384,999	13,637,550	34.60%
Whirlpool Findlay	3.0	425,000	410,074	8,251,000	7,719,801	29.38%
Ball	4.5	645,000	582,026	12,548,000	10,438,205	26.48%
Harpster	1.5	228,000	163,129	3,890,000	3,333,035	25.37%
Whirlpool Marion	4.5	634,000	418,217	11,166,000	-	-
Whirlpool Ottawa	1.5	220,000	202,020	4,266,000	-	-
Fleet	24.0	3,469,568	3,121,596	64,628,934	47,242,892	
Fleet Rolling 12 month Capacity Factor:						29.31%

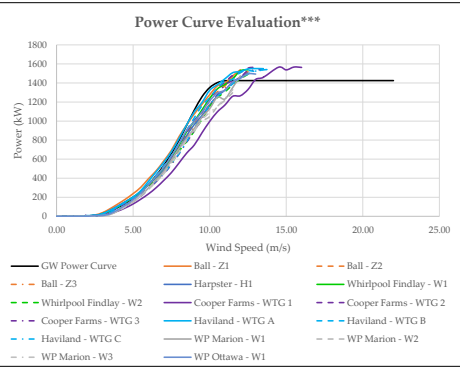
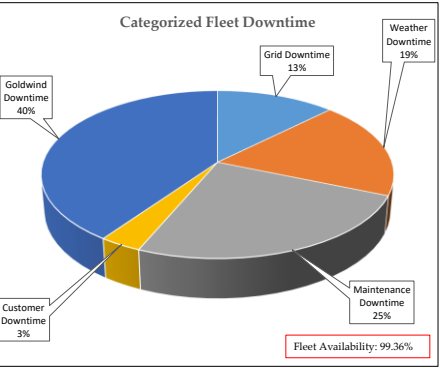
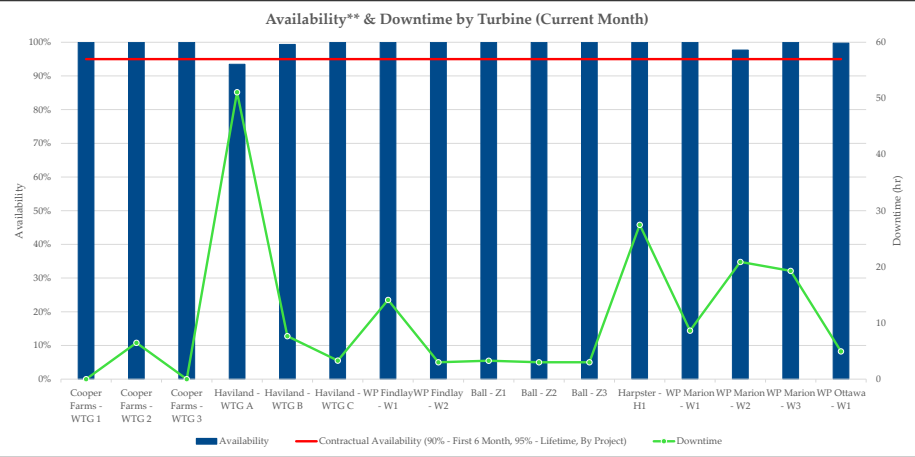


* Rolling month characterization is always one month behind because the data used in this analysis is always one month behind. Changes to rolling month characterization reflect updated analysis methodology and additional data availability.

Fleet Performance & Metrics

Safety Summary			
		This Month	Fleet Cumulative
Recordable Incident(s):		0	0
Near Miss(es):		0	0

Planned Maintenance****			
Date	Project - Event	Duration (hrs)	Wind Turbine
July-2018	WP Findlay - Goldwind 2 Year Maintenance	-15	W1, W2
July-2018	Cooper Farms - Goldwind 6 Year Maintenance	-15	WTG1, WTG2, WTG3
July-2018	Haviland Plastics - Goldwind 6 Year Maintenance	-15	WTGA, WTGB, WTGC
August-2018	WP Ottawa - Goldwind 6 Month Maintenance	-8	W1
September-2018	Ball - Goldwind 2.5 Year Maintenance	-8	Z1, Z2, Z3
October-2018	WP Marion - Goldwind 1 Year Maintenance	-15	W1, W2, W3
November-2018	Harpster - Goldwind 2.5 Year Maintenance	-8	H1



** Availability in this report refers to Goldwind's contractual availability (as defined per the applicable contract per project).
*** Power Curve validation completed using LIDAR equivalent wind speeds (conversion introduces about 3% error) and 95 % of GW Power Curve (warranty amount).
**** Cooper 6 Year maintenance, Haviland 6 Year maintenance, and Whirlpool Findlay 2 Year maintenance to be completed July-2018.