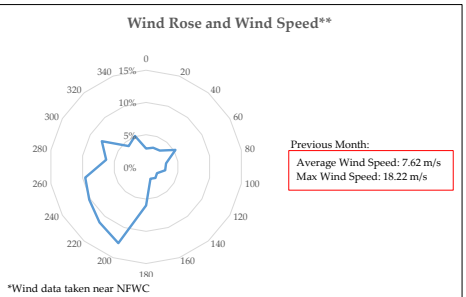
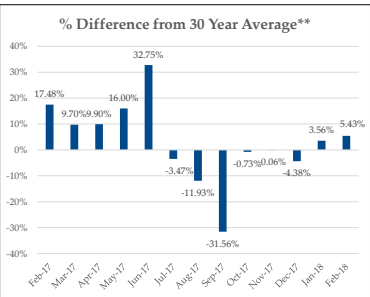
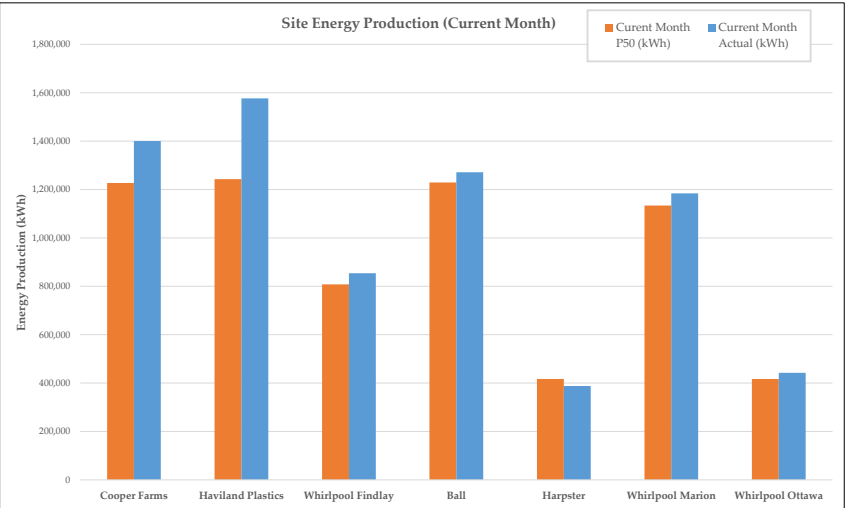


Fleet Energy Production Summary & Month Characterization\*

	Size (MW)	Energy Production				
		Curent Month P50 (kWh)	Current Month Actual (kWh)	Rolling 12 Month P50 (kWh)	Rolling 12 Month Actual (kWh)	Rolling 12 Month CF
Cooper Farms	4.5	1,227,217	1,400,340	12,122,935	13,192,891	33.47%
Haviland Plastics	4.5	1,242,761	1,576,970	12,384,999	14,743,074	37.40%
Whirlpool Findlay	3.0	808,000	853,902	8,251,000	8,300,059	31.58%
Ball	4.5	1,229,000	1,271,280	12,548,000	11,251,316	28.54%
Harpster	1.5	417,000	387,657	3,890,000	3,569,736	27.17%
Whirlpool Marion	4.5	1,134,000	1,184,135	11,166,000	-	-
Whirlpool Ottawa	1.5	417,000	442,275	4,266,000	-	-
Fleet	24.0	6,474,978	7,116,559	64,628,934	51,057,076	
Fleet Rolling 12 month Capacity Factor:						31.63%



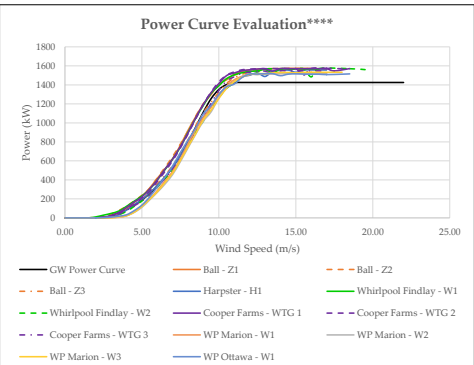
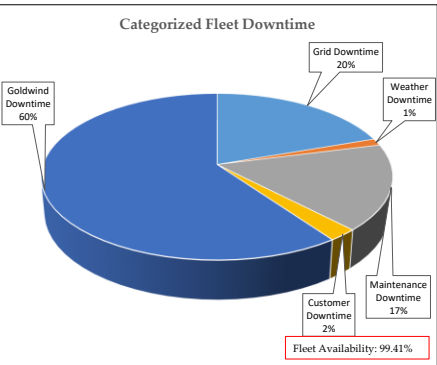
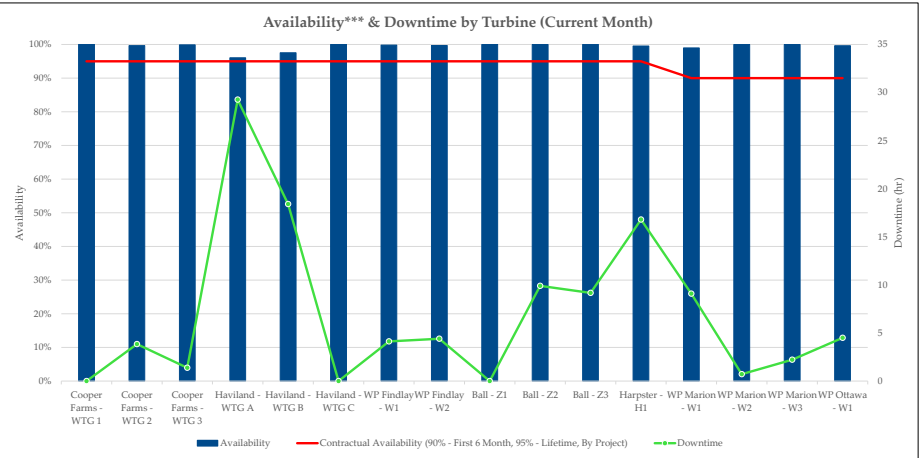
\* WP Ottawa production data pulled from the meter, full project information will be included once SCADA is fully implemented.  
\*\* Rolling month characterization is always one month behind because the data used in this analysis is always one month behind.

Fleet Performance & Metrics

Safety Summary			
This Month		Fleet Cumulative	
Recordable Incident(s):	0		0
Near Miss(es):	0		0

Planned Maintenance*			
Date	Project - Event	Duration (hrs)	Wind Turbine
April-2018	Ball - Goldwind 2 Year Maintenance	~15	Z1, Z2, Z3
May-2018	WP Marion - Goldwind 6 Month Maintenance	~8	W1, W2, W3
May-2018	WP Findlay - Goldwind 2 Year Maintenance	~15	W1, W2
June-2018	Harpster - Goldwind 2 Year Maintenance	~15	H1
June-2018	Cooper Farms - Goldwind 6 Year Maintenance	~15	WTG1, WTG2, WTG3
June-2018	Haviland Plastics - Goldwind 6 Year Maintenance	~15	WTGA, WTGB, WTGC
August-2018	WP Ottawa - Goldwind 6 Month Maintenance	~8	W1



\*\*\* Availability in this report refers to Goldwind's contractual availability (as defined per the applicable contract per project).  
\*\*\*\* Power Curve validation completed using LiDAR equivalent wind speeds (conversion introduces about 3% error) and 95% of GW Power Curve (warranty amount).  
Haviland not included this month due to SCADA issues.  
\*\*\*\*\*Ball planned maintenance complete at Z2 and Z3 with the exception of basement maintenance, all to be complete in April.